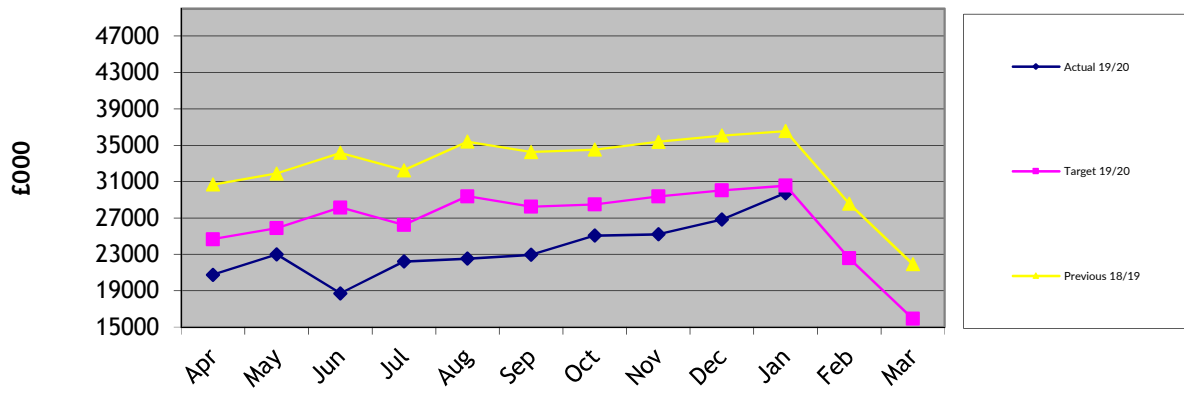
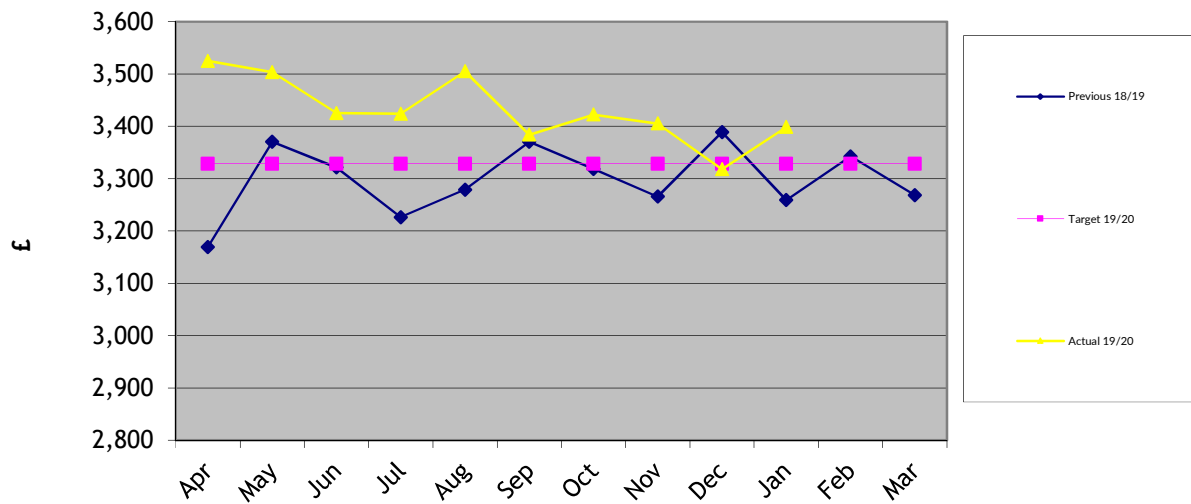


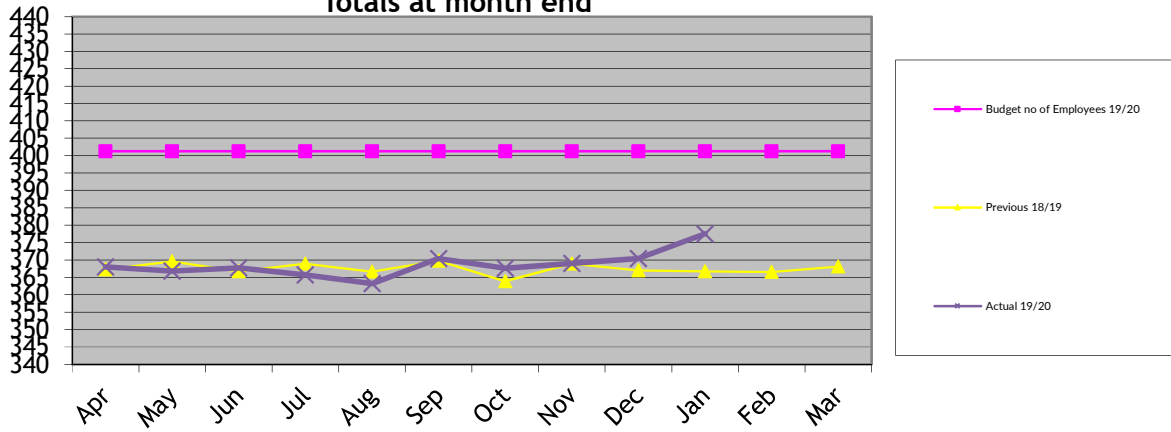
Graph 1 - Monthly Investment Balance



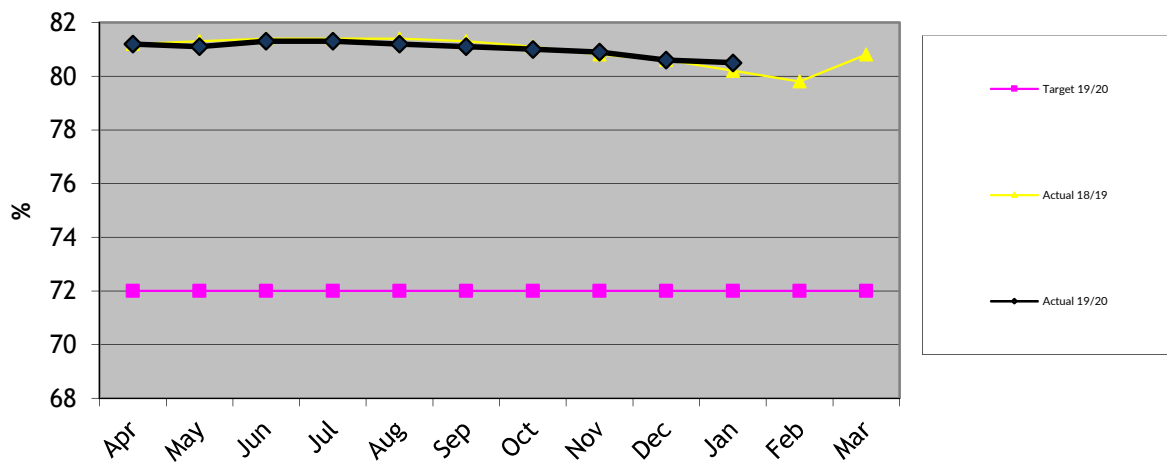
Graph 2 - Av. monthly cost per fte of staff on SDC payroll



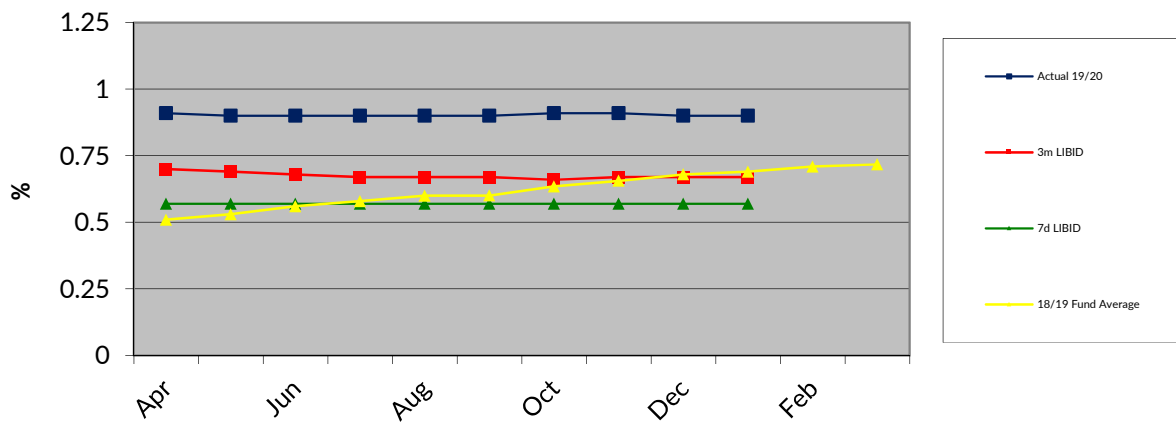
**Graph 3 - Number of Directly Employed ftes
 (includes externally funded staff)
 Totals at month end**



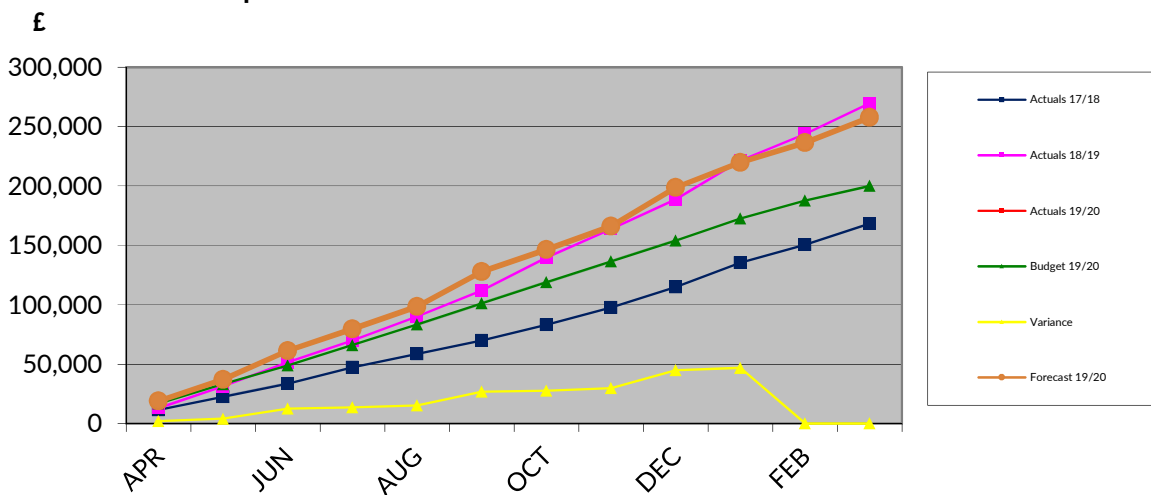
Graph 4 - Council Tax % on direct debit



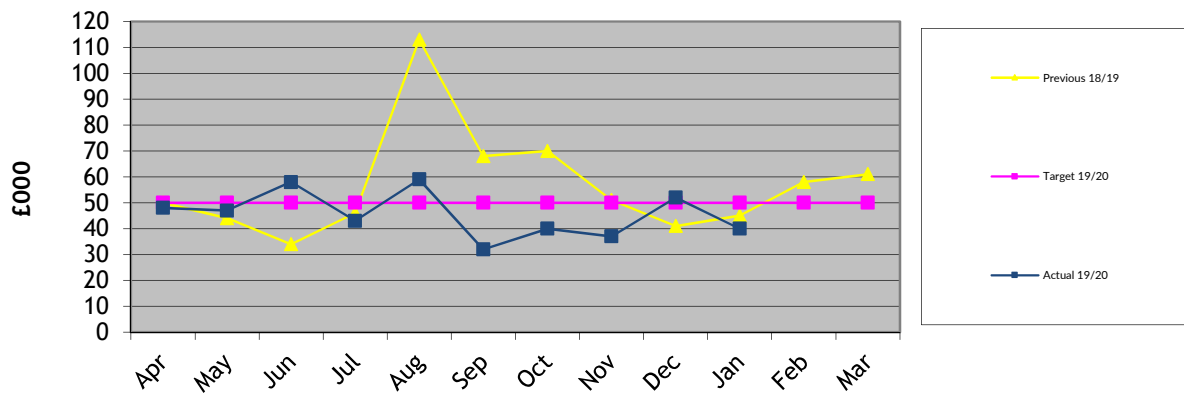
Graph 5 - Investment Return %



Graph 6 - Investment Return £



Graph 7 - Sundry debts over 21 days



Graph 8 - Sundry debts over 61 days

